

# AURORA 3

SEATS 3    31 JETS  
60" x 84" x 34"



The Aurora 3 was designed for small spaces while placing total comfort and hydrotherapy first. Stretch out in the luxurious lounger or ease into the most comfortable captain's chair that gives head-to-toe hydrotherapy. This hot tub delivers huge relaxation in a small package! The Aurora 3 is shown above in Silver Satin.

## SPECIFICATIONS

### DIMENSIONS

60" x 84" x 34"

### WATER CAPACITY

210 gal | 795 ltr

### WEIGHT

395 lbs | 179 kg dry  
2,148 lbs | 973 kg filled

### WATER FEATURE

Infinity Edge

### WATER CARE/FILTRATION

50 square foot filter  
Mazzei Ozone system

### CONTROL SYSTEM

Balboa BP100  
240v/50amp

### HEATER

5.5 kW Heater

### ENERGY EFFICIENCY

2.0 lb density polyurethane foam  
Temp Shield & Foam Board

### JET PUMPS

1 pump, 4 total horsepower

### LIGHTING

20 LED points-of-light

## OPTIONS

### UPGRADED CONTROLS

SpaTouch touchscreen/WiFi

### ADVANCED JETTING

AirX System

## WARRANTY

### LIMITED LIFETIME

Slip Resistant Shell

### FIVE YEARS

Premium Cabinet

### THREE YEARS

Electrical and Plumbing

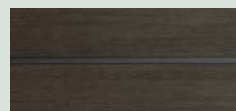
### PREMIUM CABINET COLORS



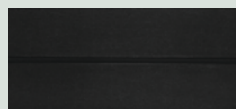
COASTAL GRAY  
with BLACK CORNERS



WALNUT



BARNWOOD



BLACK SLATE

### SLIP-RESISTANT SHELL COLORS



WHITE SATIN



SILVER SATIN



OPAL SATIN

# AURORA P+

SEATS 3    21 JETS  
60" x 84" x 34"



The Aurora 3 was designed for small spaces while placing total comfort and hydrotherapy first. Stretch out in the luxurious lounger or ease into the most comfortable captain's chair that gives head-to-toe hydrotherapy. This hot tub delivers huge relaxation in a small package! The Aurora P+ is shown above in Silver Satin.

## SPECIFICATIONS

### DIMENSIONS

60" x 84" x 34"

### WATER CAPACITY

210 gal | 795 ltr

### WEIGHT

395 lbs | 179 kg dry  
2,148 lbs | 973 kg filled

### WATER FEATURE

Infinity Edge

### WATER CARE/FILTRATION

50 square foot filter

### CONTROL SYSTEM

Balboa BP100  
120v/15amp  
convertible to 240v/50amp

### HEATER

1 kW Heater  
convertible to 4 kW Heater

### ENERGY EFFICIENCY

2.0 lb density polyurethane foam  
Temp Shield & Foam Board

### JET PUMPS

1 pump, 2 total horsepower

### LIGHTING

20 LED points-of-light

## OPTIONS

### UPGRADED CONTROLS

SpaTouch touchscreen/WiFi

### WATER CARE

Mazzei Ozone System

## WARRANTY

### LIMITED LIFETIME

Slip Resistant Shell

### THREE YEARS

Premium Cabinet

### TWO YEARS

Electrical and Plumbing

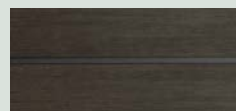
### PREMIUM CABINET COLORS



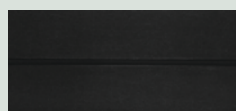
COASTAL GRAY  
with BLACK CORNERS



WALNUT

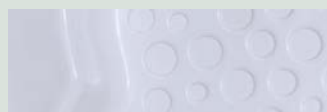


BARNWOOD



BLACK SLATE

### SLIP-RESISTANT SHELL COLORS



WHITE SATIN



SILVER SATIN



OPAL SATIN

# AURORA P

SEATS 3 17 JETS  
60" x 84" x 34"



The Aurora 3 was designed for small spaces while placing total comfort and hydrotherapy first. Stretch out in the luxurious lounger or ease into the most comfortable captain's chair that gives head-to-toe hydrotherapy. This hot tub delivers huge relaxation in a small package! The Aurora P is shown above in Opal Satin.

## SPECIFICATIONS

### DIMENSIONS

60" x 84" x 34"

### WATER CAPACITY

210 gal | 795 ltr

### WEIGHT

395 lbs | 179 kg dry  
2,148 lbs | 973 kg filled

### WATER FEATURE

Infinity Edge

### WATER CARE/FILTRATION

50 square foot filter

### CONTROL SYSTEM

Balboa BP100  
120v/15amp  
convertible to 240v/50amp

### HEATER

1 kW Heater  
convertible to 4 kW Heater

### ENERGY EFFICIENCY

2.0 lb density polyurethane foam  
Temp Shield & Foam Board

### JET PUMPS

1 pump, 1 total horsepower

### LIGHTING

LED Spa Light

## OPTIONS

### UPGRADED CONTROLS

SpaTouch touchscreen/WiFi

### WATER CARE

Mazzei Ozone System

## WARRANTY

### LIMITED LIFETIME

Slip Resistant Shell

### THREE YEARS

Premium Cabinet

### TWO YEARS

Electrical and Plumbing

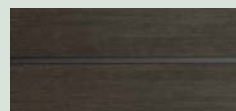
### PREMIUM CABINET COLORS



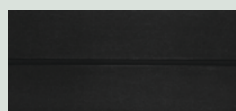
COASTAL GRAY  
with BLACK CORNERS



WALNUT



BARNWOOD



BLACK SLATE

### SLIP-RESISTANT SHELL COLORS



WHITE SATIN



SILVER SATIN



OPAL SATIN