



EVERYDAY VITALITY, PLUG-N-PLAY EASE

THE FREEFLOW® COLLECTION

BY HOT SPRING® SPAS



Introducing the Freeflow® Collection by Hot Spring® Spas



PLUG-N-PLAY

Save time and money with Plug-N-Play technology which requires no additional wiring. Simply fill up your hot tub, plug it into any standard 115v outlet, and enjoy!



PORTABLE HOT TUBS YOU'LL LOVE

Lightweight and easy to move, Freeflow Collection spas make it simple to enjoy hot tubbing, virtually anywhere.



BUILT FOR VALUE

Freeflow Collection spas are rotationally molded, producing a durable, unibody hot tub shell that eliminates the need for an internal support frame. By reducing material and labor costs, you get a premium hot tub experience at an affordable price.



ENERGY EFFICIENT HOT TUBS

Every Freeflow Collection spa is fully insulated with expanding spray-in foam for maximum heat retention. All spas meet the strict guidelines of the California Energy Commission (CEC), so you can relax worry-free, knowing your energy-efficient spa is helping keep utility costs in check.



EASY WATER CARE

Freeflow Collection spas come ready for the FROG® sanitizing system. Prefilled cartridges automatically release sanitizer and minerals to keep water soft, clean, and clear with less effort. Available in the U.S. only; bromine is available in Canada.



Smoke with
Diamond Weave

Five Models to Choose From

MONTEREY™

5 Seats | 40 Jets
6'6" x 6'6" x 34"



EXCURSION®

4 Seats | 33 Jets
6'6" x 6'6" x 34"



AZURE™

4 Seats | 25 Jets
5'7" x 6'7" x 33"



APTOS™

5 Seats | 21 Jets
6'6" Diameter x 33"



MINI™

2 Seats | 11 Jets
6' x 4'5" x 29"



Hot Tubbing is as Easy as 1-2-3!

1. FILL IT UP.

2. PLUG IT IN.

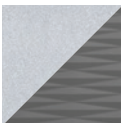
3. ENJOY!



Dune with
Diamond Weave

Options

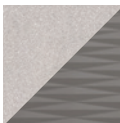
COLORS



Smoke
with
Diamond
Weave



Smoke
with
Mosaic



Dune
with
Diamond
Weave



Dune
with
Mosaic



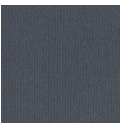
Smoke
with
Coastal Gray



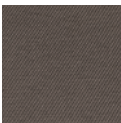
Dune
with
Espresso

Aptos Options

COVERS



Gray
Pairs with
Smoke Shell



Cocoa
Pairs with
Dune Shell

STEPS



Available in
Dune or Smoke

Freeflow® Collection

	MONTEREY™	EXCURSION®	AZURE™	APTOS™	MINI™
Seat Capacity	5	4	4	5	2
Dimensions*	6'6" x 6'6" x 34" 198 cm x 198 cm x 86 cm	6'6" x 6'6" x 34" 198 cm x 198 cm x 86 cm	5'7" x 6'7" x 33" 170 cm x 201 cm x 84 cm	6'6" Diameter x 33" 198 cm Diameter x 84 cm	6' x 4'5" x 29" 183 cm x 135 cm x 74 cm
Jet Count	40	33	25	21	11
Water Capacity	265 g / 1025 L	250 g / 950 L	235 g / 900 L	265 g / 1025 L	125 g / 475 L
Dry Weight	425 lb / 195 kg	390 lb / 175 kg	360 lb / 165 kg	360 lb / 165 kg	260 lb / 120 kg
Filled Weight	3515 lb / 1620 kg	3175 lb / 1445 kg	3020 lb / 1385 kg	3450 lb / 1590 kg	1655 lb / 755 kg
Color	Smoke, Dune	Smoke, Dune	Smoke, Dune	Smoke, Dune	Smoke, Dune
Cabinet Pattern	Diamond Weave, Mosaic	Diamond Weave, Mosaic	Diamond Weave, Mosaic	Espresso, Coastal Gray	Diamond Weave, Mosaic
Step Type	Straight Roto, Brown or Gray	Straight Roto, Brown or Gray	Straight Roto, Brown or Gray	Curved Roto, Brown or Gray	Straight Roto, Brown or Gray
WeatherPro™ Cover	Gray, Cocoa 2.5" to 4.0" tapered, 1lb. density foam core	Gray, Cocoa 2.5" to 4.0" tapered, 1lb. density foam core	Gray, Cocoa 2.5" to 4.0" tapered, 1lb. density foam core	Gray, Cocoa 2.5" to 4.0" tapered, 1lb. density foam core	Gray, Cocoa 2.5" to 4.0" tapered, 1lb. density foam core
Cover Lifters	Low Mount, Cover Rx	Low Mount, Cover Rx	Cover Rx	Low Mount, Cover Rx	Cover Rx
Lighting	Footwell Multi-Color Light, 2 External Lights	Footwell Multi-Color Light, 2 External Lights	Footwell Multi-Color Light, 2 External Lights	Footwell Multi-Color Light	Footwell Multi-Color Light
Jet Pump	2-Speed 1.5HP	2-Speed 1.5HP	2-Speed 1.5HP	2-Speed 1.5HP	2-Speed 1.5HP
Jets	8 Ultra Mini Jets 26 Mini Jets 6 Twin Pulse Jets	8 Ultra Mini Jets 21 Mini Jets 4 Twin Pulse Jets	8 Ultra Mini Jets 13 Mini Jets 4 Twin Pulse Jets	18 Mini Jets 2 Twin Pulse Jets 1 Turbo Jet	6 Mini Jets 5 Twin Pulse Jets
Controls	LCD Screen	LCD Screen	LCD Screen	LCD Screen	LCD Screen
Heater	1kw/115v; 4kw/230v	1kw/115v; 4kw/230v	1kw/115v; 4kw/230v	1kw/115v; 4kw/230v	1kw/115v; 4kw/230v
Filtration	50 sq ft Filter	50 sq ft Filter	50 sq ft Filter	50 sq ft Filter	25 sq ft Filter
Water Care System	FROG® Cartridge Ready** Ozone Optional	FROG® Cartridge Ready** Ozone Optional	FROG® Cartridge Ready** Ozone Optional	FROG® Cartridge Ready** Ozone Standard	FROG® Cartridge Ready** Ozone Optional
Electrical Requirements	115v Plug-N-Play includes GFCI power cord / 230v convertible***	115v Plug-N-Play includes GFCI power cord / 230v convertible***	115v Plug-N-Play includes GFCI power cord / 230v convertible***	115v Plug-N-Play includes GFCI power cord / 230v convertible***	115v Plug-N-Play includes GFCI power cord / 230v convertible***
Water Features	Waterfall	Waterfall	Waterfall	Whirlpool Jet	N/A
Warranty	5-Year Structure; 5-Year Shell/Surface; 2-Year Textured Cabinet; 1-Year No-Leak Plumbing; 1-Year Component & Labor				

* Subject to change

** FROG®@ease® products are only available in the U.S. For Canada, FROG® Serene® Bromine is available.

*** Sub-panel not included.



© 2026 Watkins Wellness®, 1280 Park Center Drive, Vista, California 92081. All rights reserved. All trademarks are the property of Watkins Wellness Corporation. Specifications, features, and colors are subject to change without notice. Not all features are available on all products. FROG® is a registered trademark of King Technology. Rev. A